



## Capital City Nissan Of Topeka



## Automobile Status Report

Prepared For



INVENTORY: 9428P

2019 Chevrolet EQUINOX

**Date** April 05, 2024

**VIN** 3GNAXKEV1KL150132

**Mileage** 57661

**RO#** 6074749



Service Advisor

Jorge Juarez

jorgejcapcitynissan@gmail.com

7852676700



**Capital City Nissan Of Topeka**  
1980 Sw Topeka Blvd  
Topeka, KS 66612

# Capital City Nissan Of Topeka Service Commitment

## Excellence at every turn... and every straightaway

Our dealership's primary goal is to satisfy every customer at every opportunity. You visit our service department regularly, and we have developed a number of ways to make your visit more comfortable and informative. We know that you want straight answers, and that's the only way we will deliver it to you.

We understand that your knowledge of your vehicle and its necessary repairs is probably not on par with the understanding that your technician has. In order to be sure that his findings and reporting is as clear and concise as possible, we use this Vehicle Information Booklet as a tool to help us communicate your vehicle's condition to you.

Our technicians are the most qualified to work on your vehicle. They have trained extensively, and partake in continuing education regularly to be sure that they are up to date on any changes and improvements handed down from the manufacturer. Our service advisors strive to make your experience with us a pleasant one. They are here to attend to your automotive needs as well as communicate effectively between your technician and you.

Please make yourself comfortable in our waiting area. Watch some TV, use your laptop with our free WI-FI access or just relax and enjoy the quiet. Our courtesy shuttle can take you shopping, to a movie or home if you prefer.

We appreciate your business and will continue to strive for excellence in everything we do for you.

# Multi-Point Inspection Checklist

RO# 6074749

Customer Name INVENTORY: 9428P

Advisor Name Jorge Juarez

Technician Name Tyler ARD

Created on 4/3/2024 12:18 PM

Printed on 4/5/2024

Did your Service Advisor review the results of this multi-point inspection checklist with you?

- Checked and OK at this time     May Require Future Attention     Requires immediate attention

## Dealer/Vehicle Information

- VIN:  
   Dealer Name:  
   Stock Number:  
   Model:  
   Exterior Color:  
   Year:  
   Date Inspected:  
   Mileage  
   WO#:

## VIN/TSBs/RECALLS/DTCs/MAINTENANCE

1. VIN Matches Other VINs on Vehicle and Paperwork/Proper Attachment (Original/No Alterations)  
   2. Vehicle has Required State Decals (Emission, Inspection, Etc.)  
   3. All OEM Service Campaigns and Recalls have been Performed  
   4. Check, Document, Repair and Retest Any Diagnostic Trouble Codes  
   5. Oil Change/Scheduled Maintenance Performed

## CONSULT III PLUS

6. Check for All DTC Sub-systems Inspection  
   7. Perform Applicable Software Updates  
   8. Perform Idle Air Volume Learn (IAVL) (If Required)

## POWERTRAIN/CHASSIS - Engine Mechanical Condition

9. Fluid Leakages (Record Where and What is Leaking)  
   10. Oil in Air Cleaner (Can Indicate Excessive Blow-by or Faulty PCV System)  
   11. Water in Oil (Check Underside of Oil Filler Cap)  
   12. Engine Oil (Condition/Level)  
   13. Timing Belt Replaced per OEM Maintenance Schedule  
   14. Cylinder Power Balance - Run Diagnostics Address Error Codes (If Applicable)  
   15. Fluids (Condition/Levels)  
   16. Vacuum Hoses (Condition)  
   17. Engine Mounts (Condition)

## POWERTRAIN/CHASSIS - Cooling System

18. Hoses (Condition)  
   19. Coolant (Condition/Level/Leaks/Freeze Point/Voltage/Corrosion)  
   20. Radiator (Condition/Tube/Fins) Pressure Test Cap/System  
   21. Cooling Fan/Fan Clutch/Fan Motor (Condition/Operation/Auxiliary Fan Operation)  
   22. Water Pump (Noise/Leaks)

23. Recovery Tank (Condition/Fluid Level/Sensor Operation)

24. Belts (Condition/Cracks/Glazed/Frayed/Adjustment)

#### POWERTRAIN/CHASSIS - Fuel System

25. Fuel Pump Noise/External Fuel Pump Leakage

26. Fuel Lines/Hoses (Condition/Check for Signs of Leakage)

27. Fuel Filter (Condition/Replace per Maintenance Schedule)

28. Air Filter (Condition/Replace per Maintenance Schedule)

29. Check Injection Pump Timing (Diesel)

30. Perform Boost Pressure Test (Turbo Diesel)

31. Check Vacuum Pump Operation (Diesel)

#### POWERTRAIN/CHASSIS - Electrical System

32. Remote Keyless Entry Fob (Operation/Battery Condition)

33. Wiring (Condition)

34. Starter Operation (Draw/Amperage)

35. Alternator Charging (Voltage and Amperage Output) Record Regulated/Maximum

36. Ignition System Operation

37. Battery Condition: (Fluid/Level/Corrosion/Voltage/Load Test) Record Readings (Required Nissan Battery Tester)

38. Check Pre-Glow System (Amperage Draw-Diesel)

#### POWERTRAIN/CHASSIS - Transmission/Differential/Transaxle/Transfer Case

39. Transmission System (Condition/Operation)

40. Automatic Transmission/Transaxle Fluids (Condition/Level/Leaks/Fill or Change Oil and Filters)

41. Manual Transmission/Drive Axle/Transfer Case Fluids (Condition/Level/Leaks/Fill or Change Oil)

42. Transmission Mounts (Condition/Cracked/Oil Soaked/Broken/Replace Worn Mounts)

43. Transfer Case (Operation)

44. Universal Joints/CV Joints/Boots (Condition)

45. Differential/Drive Axles (Condition/Leaks/Damage)

46. Clutch (Operation/Fluid Level)

#### POWERTRAIN/CHASSIS - Hybrid System

47. Inverter Coolant (Level/Condition/Concentration)

48. Hybrid Battery (Charge Level)

49. 12-V Auxiliary Battery (Correct Application)

50. Inspect Integrity of Protective Shields for High Voltage Harness Under Vehicle from HV Battery to Engine Compartment

51. Hybrid Electronic Control Unit (Run Diagnostic)

52. Multi-Information Display (Operation)

53. Diagnostic Scan (Check for Codes and Software Updates)

#### POWERTRAIN/CHASSIS - Suspension/Steering

54. Tires (Check for Uneven Wear)

55. Steering Suspension (Fluid/Condition/Level of Fluid)

56. Steering Gear and Linkage (Condition/Leaks/Boots)

57. Power Steering Pump and Hoses (Leaks/Noise/Operation)

58. Suspension System/Control Arms/Ball Joints/Bushings (Condition)

59. Tie Rods and Idler Arm (Condition)

- 60. Sway Bars/Links/Bushings (Condition)
- 61. Springs (Condition/Ride Height)
- 62. Struts/Shocks (Leakage)

### POWERTRAIN/CHASSIS - Brakes/Exhaust System

- 63. Brakes/Calipers/Lines Operate Properly with No Signs of Damage
- 64. Brake Fluid (Level/Condition Top Off as Necessary)
- 65. LF 4
- RF 5
- RR 5
- LR 5
- 66. Rotors/Drums (Condition/Operation)
- 67. Brake System Lines/Hydraulics/Hoses/Fittings (Condition/Wear/Leaks)
- 68. Parking Brake (Operation/Adjustment/Condition)
- 69. Master Cylinder and Booster (Operational/Leaks)
- 70. Entire Exhaust System (Condition/Leaks/Damage/Noise)
- 71. Catalytic Converter and Shielding Condition
- 72. Perform Emission Control Tests and record Readings

### BODY FRAME - Unibody/Frame

- 73. Visually inspect for Repairs, Damage, Abnormal Tire Wear. Note: Overall Vehicle Inspection Should Take Place at This Point for Rust and Damage Due to Some Natural Disaster. Look Under Carpet in Trunk, Interior and Under Dash For Flood Damage.

### BODY FRAME - Doors/Hood/Trunk/Tailgate Operation

- 74. Release Mechanisms Manual/Automatic, Hinges, Alignment and Proper Attaching Devices (Bolts and Over-spray Indications of Damage Repairs/Proper Operation and Closing)

### ROAD TEST

- 75. Starting Cold/Hot
- 76. Engine Idle Quality
- 77. Engine Performance/Smooth Acceleration
- 78. Engine Noise (Cold/Hot and High/Low Speeds)
- 79. Transmission/Transaxle Noise (Cold/Hot)
- 80. Automatic Transmission Shift Points/Slippage (Operational/Smooth/Proper Shift/Points/Check at All Shift Points - Overdrive Control Switch and Indicator Light)
- 81. Shift Interlock (Operation)
- 82. Drive Axle and Transfer Case BEarings or Gear Nois/Vibration (Adjust or Replace)
- 83. Manual Transmission (Gear Change/Operation/No Grinding)
- 84. Clutch Operation (Smooth Engagement/Slippage/Chatter)
- 85. Steering/Rack and Pinion/Steering Linkage Performance (Steering Wheel Free Play/Center)
- 86. Brakes/ABS (Effectiveness/Operation/Noise/No Pulling or Pulsating) Note: ABS may pulsate under hard braking
- 87. Cruise Control Operation (Including Resume)
- 88. Intelligent Cruise Control (Operation)
- 89. Gauge/Speedometer/Techometer/Odometer/Oil (Operation)
- 90. Body/Suspension (Performance/Noise/Rough Road Test)
- 91. Tire Pressure Monitoring System (Operational/Indicator Light)

### INTERIOR - Heating/Ventilation/AC/Defogger/Defrost

- 92. Air Conditioning System (Cold/Condition/Operation)
- 93. Heating System (Hot/Condition/Operation)
- 94. Defogger/Defrost (Operation)
- 95. Air Cabin Filter (Condition: Change per Maintenance Schedule)

#### INTERIOR - Window/Door Lock Operation

- 96. Door Locks/Controls (Manual/Automatic Operation)
- 97. Child Safety Locks (Operation)
- 98. Windows/Controls (Manual/Automatic Operation, Locks)

#### INTERIOR - Air Bags/Seat Belts

- 99. Seat Belts (Condition/Operation)
- 100. Air Bags (Exterior Condition/Intact/No Codes/Dash Light Operation) Note: When inspecting the Air Bag System, look carefully at the Steering Wheel for abnormal wear (could indicate vehicle has been repaired and a used Steering Wheel and Air Bag have b

#### INTERIOR - Audio/Alarm/Navigation Systems

- 101. Audio System - Radio, Cassette, CD, Speaker (Condition/Operation)
- 102. Antenna (Condition/Operation)
- 103. Alarm/Theft Deterrent System (Condition/Operation)
- 104. Navigation System (Operation)

#### INTERIOR - Interior Amenities

- 105. Clock (Condition/Operation)
- 106. Horn (Condition/Operation)
- 107. Lighter/Power Outlet(s) (Condition/Operation)
- 108. Ashtray/Storage (Condition/Operation)
- 109. Glove Compartment/Glove Compartment Light/Center Armrest/Console (Condition/Operation)
- 110. Tilt/Telescopic Steering Wheel (Operation)
- 111. Steering Wheel Lock (Operation)
- 112. Mirrors/Rear View (Condition/Operation)
- 113. Instrument Panel/Lights and Warning Lights (Condition/Operation/Bulb Check)
- 114. Warning Chimes (Operation)
- 115. Interior Courtesy/Dome/Map Lights (Operation)
- 116. Fuel Filler Door Release (Operation)
- 117. Interior Door Handle (Operation)
- 118. First-aid Kit: Check contents/update contents or replace complete Kit

#### INTERIOR - Interior Trim/Carpet/Floor Mats

- 119. Carpet (Condition/Appearance)
- 120. Floor Mats (Condition/Appearance)
- 121. Door Trim/Panels/Dashboard/Package Shelf
- 122. Headliner (Condition/Appearance)
- 123. Sun Visors (Condition/Appearance Vanity Mirror and Light)

#### INTERIOR - Luggage Compartment/Trunk/Truck Bed

- 124. Luggage Compartment Mat/Trim/Carpet/Cargo Net (Condition)
- 125. Luggage Compartment Light (Operation)
- 126. Jack/Tools (Condition)

127. Emergency Trunk Release (Operation)

#### INTERIOR - Seats

128. Seat Upholstery (Condition/Worn/Ripped/Cracked/Faded)

129. Seat/Headrest Adjustments (Manual/Automatic Operation)

130. Heated/Cooled Seats (Operation)

#### INTERIOR - Sunroof/Moonroof/Convertible Top

131. Sunroof/Moonroof (Condition/Operation)

132. Convertible Top (Condition/Operation/Rear Window and Zipper Operation)

#### BODY EXTERIOR - Body Panels/Bumpers/Fascias

133. Inspect for Damage, Dings, Dents, Alignment, Mismatched Paint and Overall Paint Condition (Clear Coat)

134. Inspect Bumpers for Damage, Alignment and Improper Repairs

135. Bedliner (Condition)

#### BODY EXTERIOR - Grill/Trim/Molding/Roof Rack/Etc.

136. Condition: Bent, Dings, Parts Missing and Proper Attachment

#### BODY EXTERIOR - Glass/Mirror/Wiper and Washer Condition

137. Windshield (Damaged, Pitted, Repaired, Wiper Marks, Cracked)

138. Side/Rear Windows (Damaged, Pitted, Repaired)

139. Mirrors (Condition of Mirror, Hinge, Operation)

140. Wipers (Condition of Mechanism/Blade)

141. Wipers (Operation/Speeds/Delay)

142. Washer (Fluid Level/Spray Pattern)

#### BODY EXTERIOR - Exterior Lights

143. Headlights, High Beams, (Alignment/Condition/Auto-Function/Operation)

144. Taillights (Lens Condition/Operation)

145. Brake Lights/High Mount Brake Light (Lens Condition/Operation)

146. Parking Lights (Lens Condition/Operation)

147. Hazard Lights (Lens Condition/Operation)

148. Reverse Lights (Lens Condition/Operation)

149. Turn Signal/Side Marker Lights (Lens Condition/Operation)

150. License Plate Lights (Lens Condition/Operation)

151. Fog/Driving Lights (Lens Condition/Operation)

#### BODY EXTERIOR - Tires & Wheels

152. OEM Size and Speed Rating (2WD/4WD Same Brand per Axle) (AWD Same Brand All Four Tires)

153. LF 5

RF 3

RR 8

LR 8

154. Condition/Abnormal Wear (Sidewalls/Vibration/Alignment Problems)

155. Pressure (Record Reading for Each Tire)

156. Alignment (Refer to #54, #73, and #85) If Problem Noted Alignment Should be Checked

157. Spare Tire (Condition/Tread/Pressure)

158. Wheels (Condition/Visual Runout/Curb Damage/Finish)

ADDITIONAL DETAIL ITEMS

- 159. Minimum Two Keys or Keyless Remotes
- 160. Exterior is Clean and Free of Swirl Marks and Removable Scratches
- 161. Body is Free of all Dents and Reasonably Free of Dings
- 162. Bumpers and Fascia Free of Gouges and Mismatched Paint
- 163. Wheels/Wheel Covers and Tires are Clean and Properly Dressed
- 164. Engine Compartment is Clean and Properly Dressed
- 165. Interior is Free of Debris/Odor, Clean and Properly Dressed
- 166. Seats, Carpets, Headliner and Floor Mats (If Equipped) are Free of Stains
- 167. Interior Surfaces are Free of Holes, Tears, Fading, or Excessive Wear
- 168. Oil Sticker, Green Valve Stem Caps and All Maintenance Lights Reset

Technician

Date

---

Service Manager

Date

---

Used Car Manager

Date

---

Customer


Date


---



# Additional Service Recommendations

In the process of inspecting your vehicle for safety and reliability, your technician **Tyler A** made the following observations and recommends that you do the necessary repairs to resolve these issues.

 Red: requires immediate attention.

 Yellow: in need of attention soon.

## "Nissan" - Rotors: replace rear rotors

### Item Description

Your Rotors should be inspected at each service interval and replaced when indicated. Indicators that rotor replacement may be needed are:

- Grooves in rotor; surface should be smooth
- Discoloration: typically, blue or purple burn-like spots indicate excessive heat and can cause warping
- Vibration in the steering wheel during braking

Replacing your rotors when recommended maximizes stopping power and reduces stopping distance. They also contribute to proper vehicle control and increase driver and passenger safety. Why buy from a Nissan dealer?

- Nissan tested and approved for proper fit, form and function, installed by a factory trained technician.

- Protective coatings improve appearance and extend service life

- Reduced brake noise and extended brake pad life

### Reason

## Air Filter

### Item Description

Your Air Filter should be inspected at each service interval and replaced every other oil change or after 12 months.

Your air filter may need replacement if:

- There are visible signs of dirt, dust, etc.
- You experience a decrease in MPG



Your air filter traps dust and debris so that it does not get into the intake system and potentially damage the engine. A dirty air filter prevents the necessary volume of clean air from reaching the engine reducing your MPG.

### Reason



## Cabin Filter & In-Cabin Micro Filter

### Item Description

Your Cabin Filter and In-Cabin Micro Filter should be inspected at each service and replaced every other oil change or after 12 months.

Your cabin and in-cabin micro filter may need replacement if:

- Your heating and cooling system has reduced airflow or there are bad odors or a musty smell
- There are visible signs of dirt, dust or other pollutants

### Reason

The cabin filter / in-cabin microfilter function like your furnace filter at home. They clean the air by trapping pollen, bacteria, dust and exhaust gases that may find their way into a vehicle's HVAC system. Dirty filters reduce your heating and cooling efficiency



## Rotate tires

### Item Description

Our certified technician will perform a tire rotation on your vehicle. Tire rotations are crucial for even tire wear and longevity.

### Reason

If damaged or malfunctioning the transmission will not shift properly, and in most cases it will not shift at all. This can potentially damage the transmission and engine as well as decrease fuel economy,.



## Alignment

### Item Description

Alignment is one of the key maintenance factors in getting the most tread life and performance from your tires. In addition, wheel alignment provides safe, predictable vehicle control as well as a smooth and comfortable ride that's free of pulling or vibration. Today's modern suspensions require a precise four-wheel alignment that can only be achieved through a modern alignment system. This applies to both front and rear wheel drive vehicles. Aligning a car or truck involves the adjustment of the vehicle's suspension, not the tires and wheels. The direction and the angles that the tires point in after the alignment is complete, however, are critically important. There are four factors involved in setting the alignment to specification: caster, camber, toe and ride height.

### Reason

If not done, you will see uneven or rapid tire wear, pulling or drifting away from a straight line, and wandering on a straight level road. It can also cause extra load on certain suspension components, making them more likely to fail.



Alignment

## Tires - 2: 225/65r17 \*QUOTED STARFIRE\*

### Item Description

A tire is a covering for a wheel, usually made of rubber reinforced with cords of nylon, fiberglass, or other material and filled with compressed air.

### Reason

According to most states' laws, tires are legally worn out when they have worn down to 2/32" of remaining tread depth. As a tire wears it's important to realize that the tire's ability to perform in rain and snow will be reduced. With 2/32" of remaining tread depth, resistance to hydroplaning in the rain at highway speeds has been significantly reduced, and traction in snow has been virtually eliminated. If rain and wet roads are a concern, you should consider replacing your tires when they



Tires

reach approximately 4/32" of remaining tread depth.

If snow-covered roads are a concern, you should consider replacing your tires when they reach approximately 6/32" of remaining tread depth to maintain good mobility. Because tread depth is such an important element for snow traction, winter tires usually start with noticeably deeper tread depths than typical All-Season or summer tires. Some winter tires even have a second series of "wear bars" molded in their tread pattern indicating approximately 6/32" remaining tread depth to warn you when your tires no longer meet the desired tread depth.

## Front Wipers

### Item Description

Your Wipers should be inspected at each service interval and replaced when indicated.

Indicators shock replacement may be needed are:

- If blades are cracked, become misshapen or lose their flexibility
- If they do not wipe properly

Replacing your wiper blades when recommended enhances safety, increases visibility and reduces the chance of damage to your windshield.

### Reason



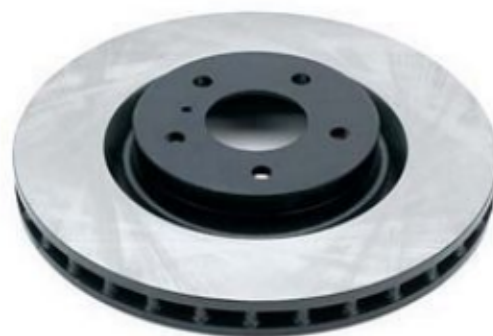
## Brake Rotor Replacement - Front

### Item Description

Brake rotors are the parts within the wheels of an automobile which brake pads squeeze in order to slow the rotation of the wheel and bring the vehicle to a stop.

### Reason

When the pads are replaced, the rotor must be resurfaced smooth to allow the new pads to have an even contact surface to work with. Only a small amount of material can be machined off of a rotor before it becomes unusable and must be replaced. A minimum thickness measurement is stamped on every rotor and the technician doing the brake job will measure the rotor before and after machining it



Brake Rotor

to make sure it doesn't go below the legal minimum. If a rotor is cut below the minimum, it will not be able to handle the high heat that brakes normally generate. This will cause the brakes to "fade," greatly reducing their effectiveness to a point where you may not be able to stop. At this point the brake rotor needs to be replaced.

## **Diagnostic - Oil Leak (Visual): \*SEND TO CABLE D. FOR DIAG**

### **Item Description**

Diagnostics when referred to in an automotive sense is the various testing done on the automobile to ensure safety and proper engine functioning. These tests are done with different sensors, computers and machines to establish a "cause and effect" relationship between what is working and what is not working with the automobile. The forms of diagnostics can range from brakes, to air conditioning, to suspension and many more. This is the diagnostic specifically used when looking for an oil leak.

### **Reason**

Diagnostic work is often needed in order to fully examine the vehicle in order to understand what is needed to fix a specific problem. Over the years, the technological advances associated with automobile diagnostics have saved technicians countless hours of inch by inch vehicle inspection that can now be done through the work of various computers. Diagnostics is a crucial step in the finding and repair of an oil leak in a vehicle.



# Completed Repairs

PREPARED FOR  
**INVENTORY: 9428P**

Service Advisor  
Jorge Juarez (752)  
jorgejcapcitynissan@gmail.com

**Date** 04/05/2024 07:46 AM  
**2019 Chevrolet EQUINOX**  
**VIN 3GNAXKEV1KL150132**  
**Mileage 57,661**  
**RO# 6074749**

Service Name	Price
"Nissan" - Rotors: replace rear rotors (I)	\$313.66
Air Filter (I)	\$38.99
Cabin Filter & In-Cabin Micro Filter (I)	\$40.49
Rotate tires	\$19.95
Alignment (I)	\$129.95
Tires - 2: 225/65r17 *QUOTED STARFIRE* (I)	\$280.00
Front Wipers (I)	\$42.49
Brake Rotor Replacement - Front (I)	\$371.80
Diagnostic - Oil Leak (Visual): *SEND TO CABLE D. FOR DIAG (I)	\$0.00
Printed on April 05, 2024	
Quote expires on May 05, 2024	

Subtotal	\$1237.33
Shop Charges	\$25.00
Tax	\$118.03
<b>Total</b>	<b>\$1380.36</b>



**Capital City Nissan Of Topeka**  
1980 Sw Topeka Blvd  
Topeka, KS 66612

(785)267-6700